



# ***BOB-CAT***<sup>®</sup>

## **PARTS MANUAL**

## **LEO PLUS SERIES**

---

### **Models:**

- 942283 BOB-CAT LEO PLUS-17.5HP 48 SD**
- 942284 BOB-CAT LEO PLUS-18HP 52 SD**
- 942285 BOB-CAT LEO PLUS-25HPI 52 SD**
- 942286 BOB-CAT LEO PLUS-20HP 52 SD**



*WARNING: If incorrectly used this machine can cause severe injury. Those who use and maintain this machine should be trained in its proper use, warned of its dangers and should read the entire manual before attempting to set up, operate, adjust or service the machine.*



---

**4133618 REV A**

**CALIFORNIA  
Proposition 65 Warning**

Diesel engine exhaust and some of its constituents are known to the State of California to cause cancer, birth defects and other reproductive harm.

 **WARNING**

The engine exhaust from this product contains chemicals known to the State of California to cause cancer, birth defects or other reproductive harm.

**Californie Proposition 65  
Avertissement**

Les échappements des moteurs diesel et certains de leurs composés sont reconnus par l'Etat de Californie pour être cancérigènes, provoquer des défauts congénitaux et d'autres dangers en matière de reproduction.

 **AVERTISSEMENT**

L'émission du moteur de ce matériel contient des produits chimiques que l'Etat de Californie considère être cancérigènes, provoquer des défauts congénitaux et d'autres dangers en matière de reproduction.

**California Advertencia  
de la Proposicion 65**

El estado de California hace saber que los gases de escape de los motores diesel y algunos de sus componentes producen cáncer, defectos de nacimiento y otros daños en el proceso de reproducción humana.

 **ADVERTENCIA**

El estado de California hace saber que los gases de escape de este producto contienen productos químicos que producen cáncer, defectos de nacimiento y otros daños en el proceso de reproducción humana.

## IMPORTANT MESSAGE

Thank you for purchasing this Bob-Cat product. You have purchased a world class mowing product, one of the best designed and built anywhere.

This machine comes with an Operation and Safety Manual. The useful life and good service you receive from this machine depends to a large extent on how well you read and understand these manuals. Treat your machine properly, lubricate and adjust it as instructed, and it will give you many years of reliable service.

Your safe use of this Bob-Cat product is one of our prime design objectives. Many safety features are built in, but we also rely on your good sense and care to achieve accident-free operation. For best protection, study the manual thoroughly. Learn the proper operation of all controls. Observe all safety precautions. Follow all instructions and warnings. Do not remove or defeat any safety features. Make sure those who operate this machine are as well informed and careful in its use as you are.

See a Bob-Cat dealer for any service or parts needed. Bob-Cat service ensures that you continue to receive the best results possible from Bob-Cat's products. You can trust Bob-Cat replacement parts because they are manufactured with the same high precision and quality as the original parts.

Bob-Cat designs and builds its equipment to serve many years in a safe and productive manner. For longest life, use this machine only as directed in the manuals, keep it in good repair and follow safety warnings and instructions. You'll always be glad you did.

**Jacobsen, a Textron Company  
One Bob Cat Lane  
Johnson Creek, WI 53038-0469**

<b>TABLE OF CONTENTS</b>	<b>FIGURES</b>	<b>PAGE</b>
SAFETY .....		2
PART SECTION .....		3
FRAME-ENGINE/CLUTCH ASSY .....	FIGURE 1 .....	4, 5
FUEL TANK/BUMPER & CONTROL PANEL .....	FIGURE 2 .....	6, 7
DECK LIFT ASSEMBLY .....	FIGURE 3 .....	8, 9
CASTER ASSEMBLY .....	FIGURE 4 .....	10, 11
KICKPLATE/SEAT ASSEMBLY .....	FIGURE 5 .....	12, 13
STEERING .....	FIGURE 6 .....	14, 15
PARKING BRAKE .....	FIGURE 7 .....	16, 17
WIRE HARNESS .....	FIGURE 8 .....	18, 19
48" SIDE DISCHARGE .....	FIGURE 9 .....	20, 21
52" SIDE DISCHARGE .....	FIGURE 10 .....	22, 23
BELTS-CUTTERDECK .....	FIGURE 11 .....	24, 25
DECALS-POWERUNIT .....	FIGURE 12 .....	26, 27

## NOTICE !!!

Unauthorized modifications may present **extreme** safety hazards to operators and bystanders and could also result in product damage.

Jacobsen, a Textron Company strongly warns against, rejects and disclaims any modifications, add-on accessories or product alterations that are not designed, developed, tested and approved by Jacobsen Engineering Department. Any Jacobsen product that is altered, modified or changed in any manner not specifically authorized after original manufacture—including the addition of “after-market” accessories or component parts not specifically approved by Jacobsen—will result in the Jacobsen Warranty being voided.

Any and all liability for personal injury and/or property damage caused by any unauthorized modifications, add-on accessories or products not approved by Jacobsen will be considered the responsibility of the individual(s) or company designing and/or making such changes. Jacobsen will vigorously pursue full indemnification and costs from any party responsible for such unauthorized post-manufacture modifications and/or accessories should personal injury and/or property damage result.



This symbol means:  
**ATTENTION!**  
**BECOME ALERT!**

Your safety and the safety of others is involved.

### Signal word definitions:

The signal words below are used to identify levels of hazard seriousness. These words appear in this manual and on the safety labels attached to Jacobsen machines. For your safety and the safety of others, read and follow the information given with these signal words and/or the symbol shown above.

#### **DANGER**

**DANGER** indicates an imminently hazardous situation which, if not avoided, **WILL** result in death or serious injury.

#### **WARNING**

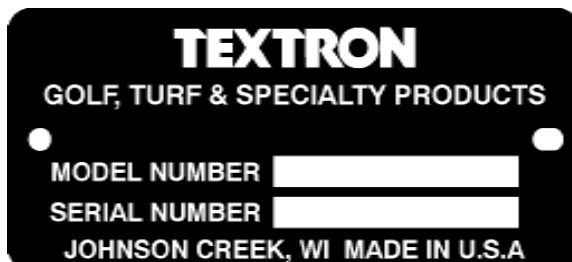
**WARNING** indicates a potentially hazardous situation which, if not avoided, **COULD** result in death or serious injury.

#### **CAUTION**

**CAUTION** indicates a potentially hazardous situation which, if not avoided, **MAY** result in minor or moderate injury. It may also be used to alert against unsafe practices or property damage.

#### **CAUTION**

**CAUTION** used without the safety alert symbol indicates a potentially hazardous situation which, if not avoided, **MAY** result in property damage.



**MODEL NUMBER:** This number appears on sales literature, technical manuals and price lists.

**SERIAL NUMBER:** This number appears only on your mower. It contains the model number followed consecutively by the serial number. Use this number when ordering parts or seeking warranty information.

# **PARTS SECTION**



# ***BOB-CAT***<sup>®</sup>

## **PARTS MANUAL**

## **LEO PLUS SERIES**

---

### **Models:**

- 942283 BOB-CAT LEO PLUS-17.5HP 48 SD**
- 942284 BOB-CAT LEO PLUS-18HP 52 SD**
- 942285 BOB-CAT LEO PLUS-25HPI 52 SD**
- 942286 BOB-CAT LEO PLUS-20HP 52 SD**



*WARNING: If incorrectly used this machine can cause severe injury. Those who use and maintain this machine should be trained in its proper use, warned of its dangers and should read the entire manual before attempting to set up, operate, adjust or service the machine.*

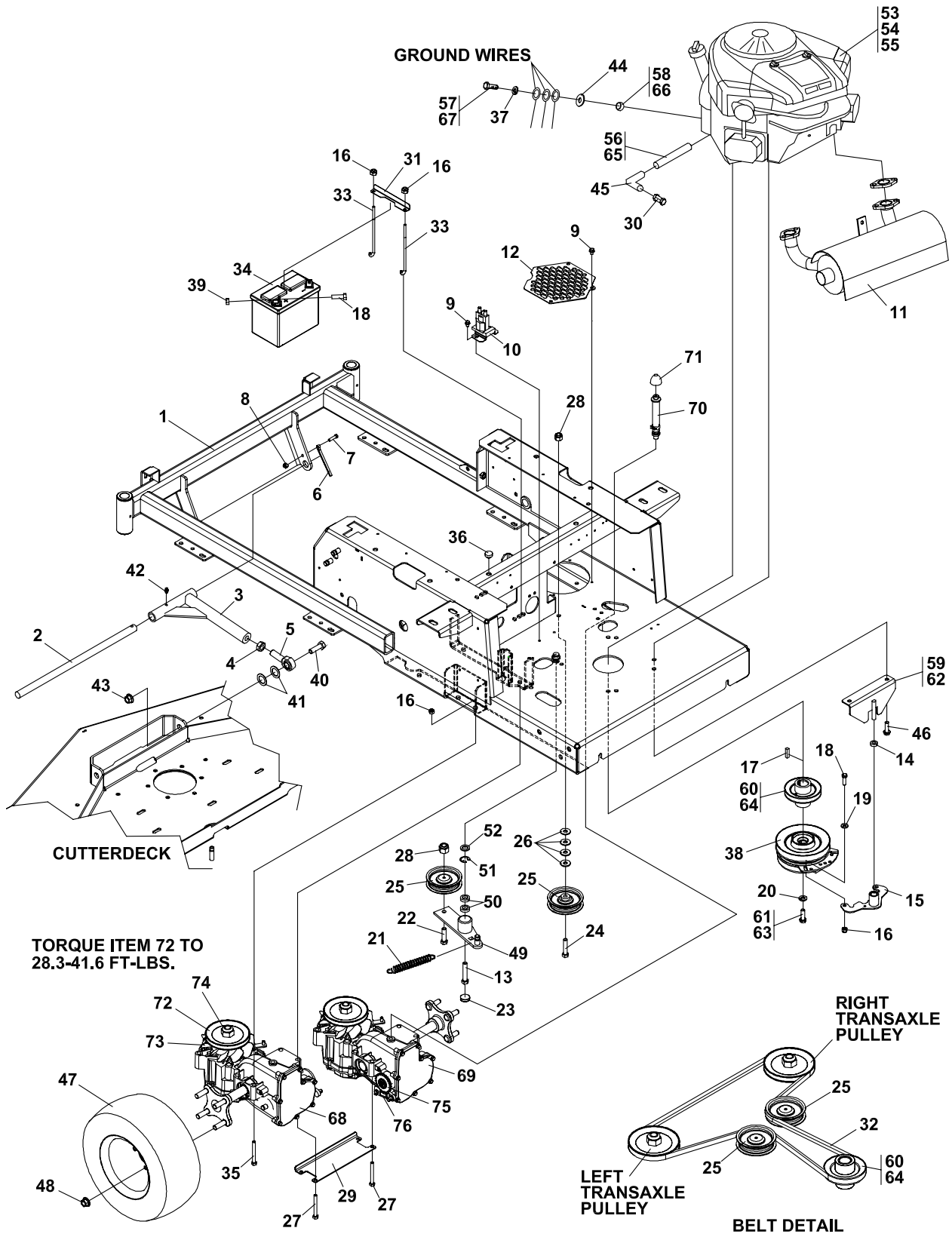


**4133618 REV A**

# FRAME-ENGINE/CLUTCH ASSY

# LEO PLUS

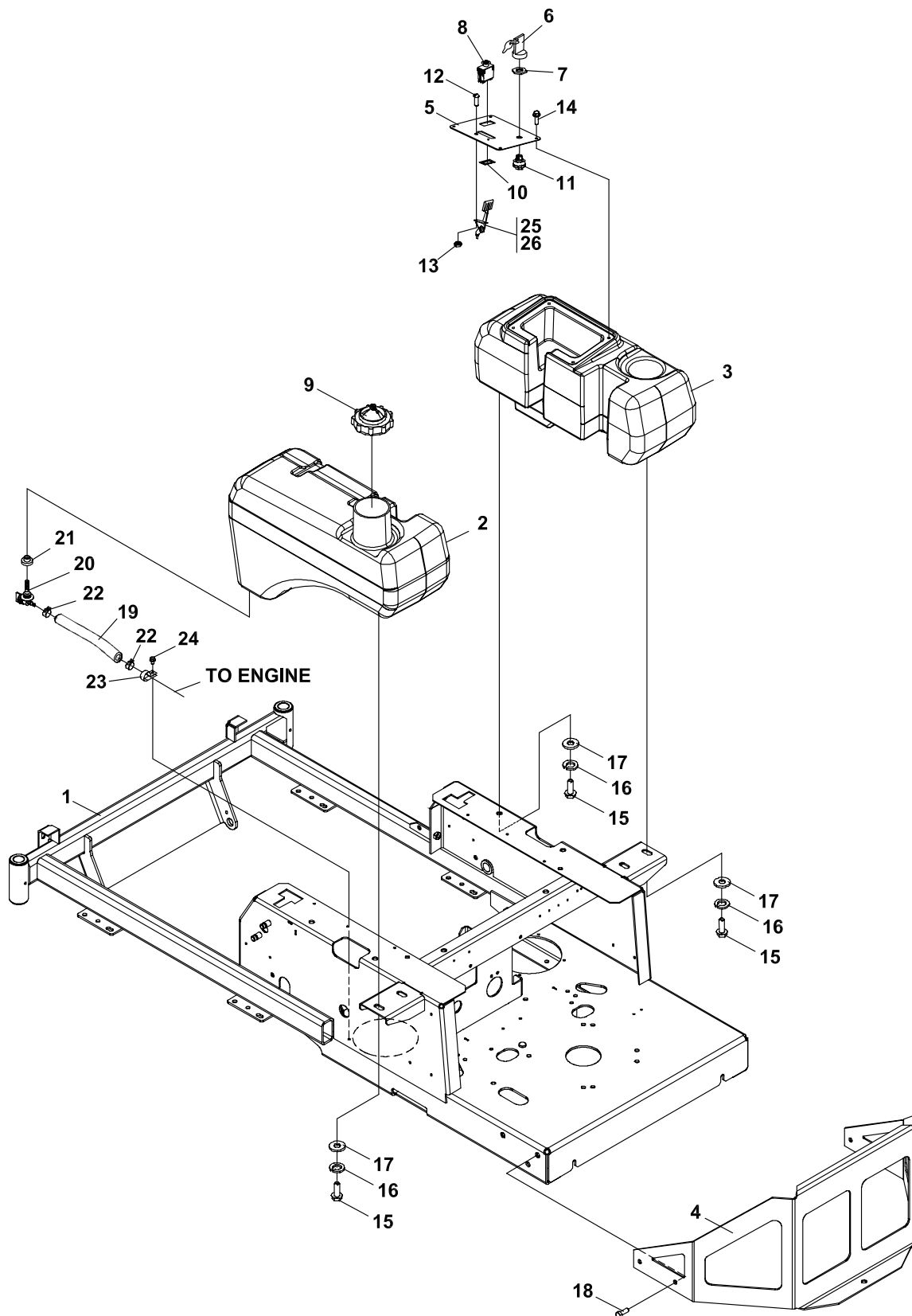
## FIGURE 1



# FUEL TANK/BUMPER & CONTROL PANEL

# LEO PLUS

## FIGURE 2



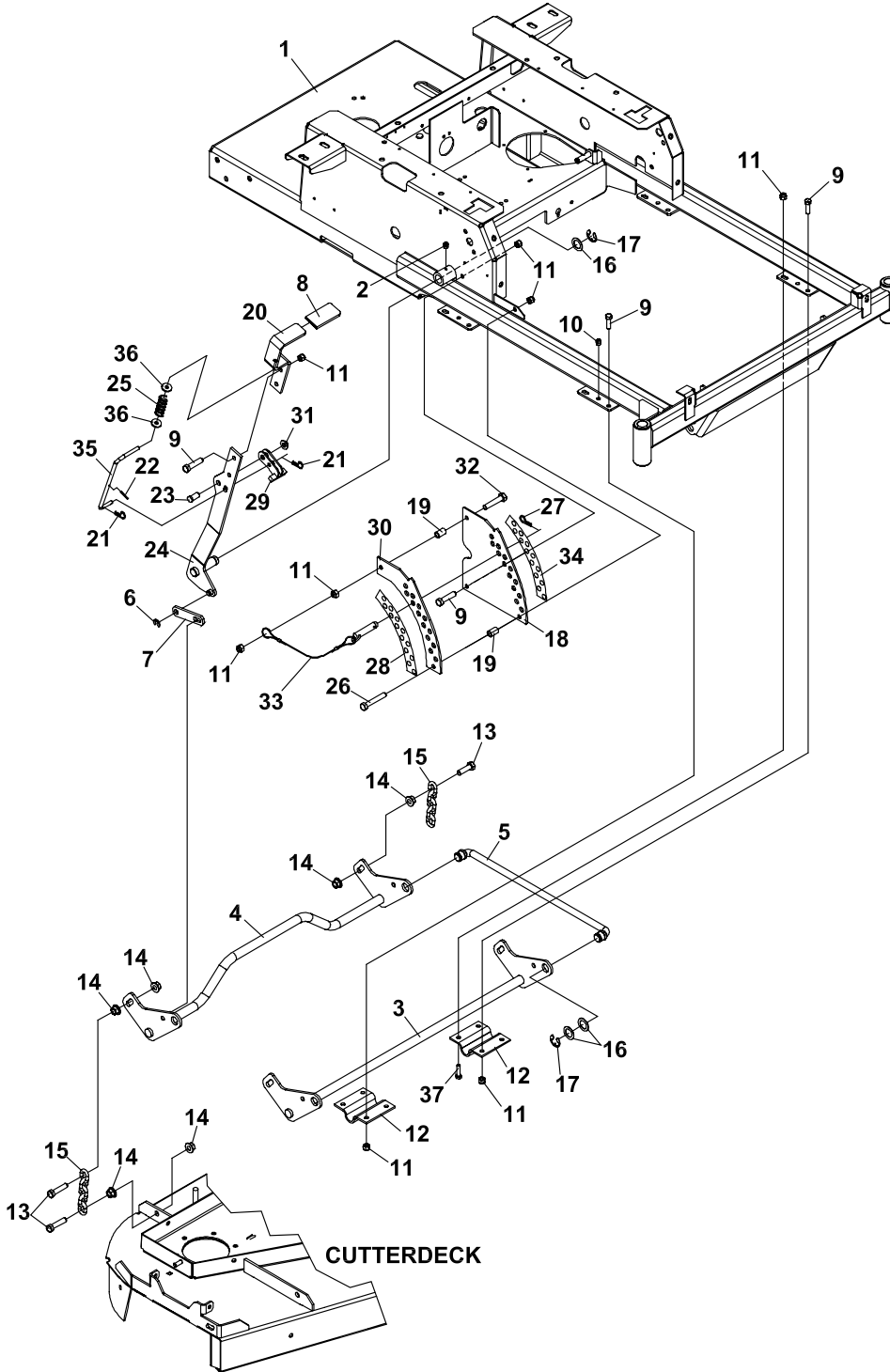


ITM	PART NO.	DESCRIPTION	QTY	ITM	PART NO.	DESCRIPTION	QTY
1	4134449	S-FRAME W/LABS, BOB-CAT	1				
2	4125836	FUEL TANK	1				
3	4125839	FENDER	1				
4	4134307.7	BUMPER	1				
5	4127004	S-CONTROL PANEL,	1				
6	128010-03	S-COVERED KEY	1				
7	128010-01	S-KEY SWITCH NUT 5/8-32	1				
8	2721505	SWITCH-PTO	1				
9	2308073	CAP-FUEL TANK	1				
10	2188178	SWITCH-RETAINER	1				
11	128010	SWITCH, KEY	1				
12	64152-46	SCREW-SLT HH 10-24X1/2	2				
13	64025-15	NUT-HEX #10-24 KEPS	2				
14	64262-001	BLT-FLG HD 1/4-20 X 1/2	4				
15	64123-15	BOLT-3/8-16X3/4 HEX	8				
16	64006-03	WASHER, 3/8	8				
17	64163-31	WASHER, 25/64X1X12	8				
18	64262-010	BLT-FLG HD 3/8-16 X 3/4	4				
19	09007	HOSE.25X.5 27"	1				
20	38540	VALVE-FUEL W/FILTER	1				
21	48310	BUSHING, FUEL TANK	1				
22	88042N	HOSE CLAMP	2				
23	48228A	CABLE CLIP-INSULATED	1				
24	64152-23	SCREW, 1/4-20X3/8 LG SP	1				
25	118020-14	CONTROL-THROTTLE (USED ON 18, 20 & 25 HP MODELS ONLY)	1				
26	38357-07	CONTROL-THROTTLE (USED ON 17.5HP ONLY)	23.50 1				

# DECK LIFT ASSEMBLY

LEO  
PLUS

FIGURE 3

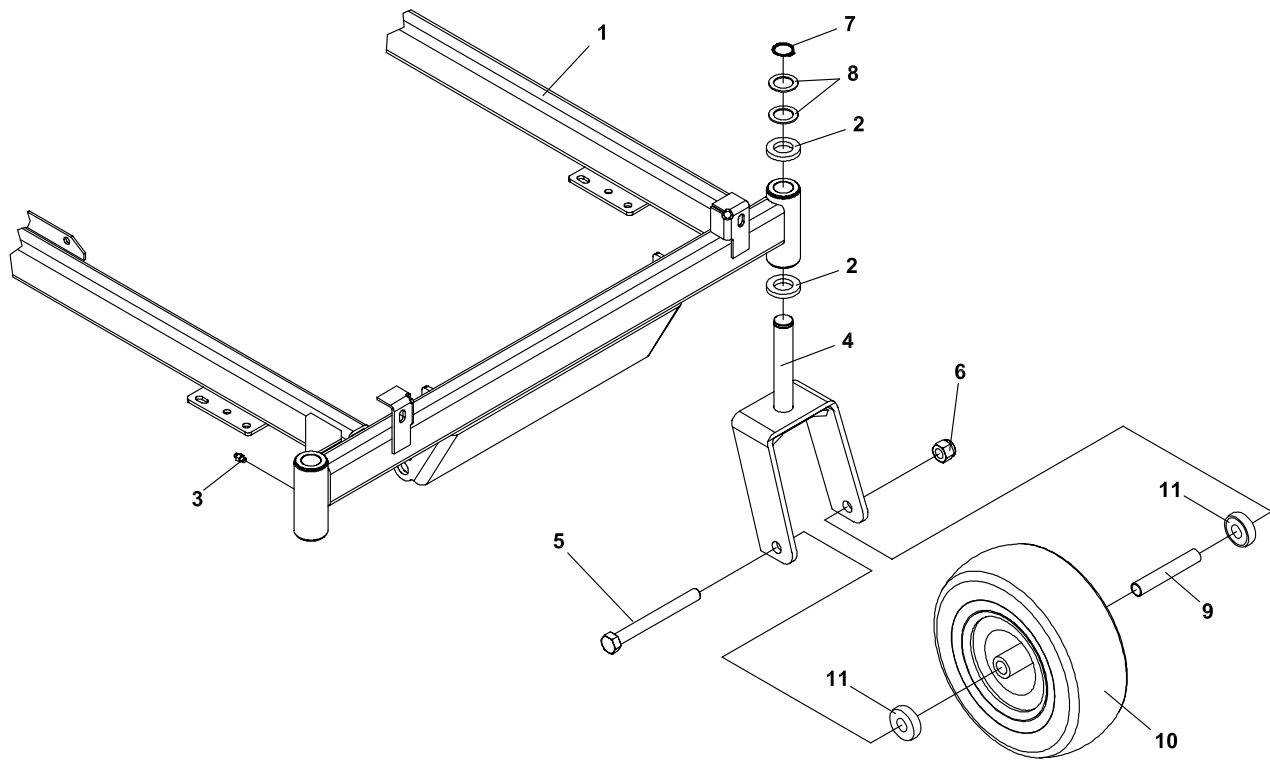


ITM	PART NO.	DESCRIPTION	QTY	ITM	PART NO.	DESCRIPTION	QTY
1	4134449	S-FRAME W/LABS, BOB-CAT	1				
2	85010N	ZERK, 1/4-28 STR	1				
3	4126355.7	WLDMT-DECKLIFT, FRONT	1				
4	4125855.7	WLDMT-DECKLIFT REAR	1				
5	4109960	WLDMT-DECK LIFT ROD	2				
6	64144-34	SNAP RING.50	1				
7	4126687.7	BRKT-LIFT LINK	1				
8	2188143	GRIP	1				
9	64123-50	BOLT-HEX 3/8-16X1	17				
10	85051	ZERK-1/8 PIPE	4				
11	64229-03	LOCKNUT-NYLON 3/8-16	22				
12	2182356.7	BRACKET-SHAFT HANGER	4				
13	64205-029	BLT-METRIC M12X1.75X40	8				
14	64246-04	NUT-WHIZ M12-1.75	16				
15	2188127	CHAIN-6.35 (.250) 5 LINKS	4				
16	64163-65	WASHER-.890X1.375X18GA	9				
17	64221-04	E-RING.875	5				
18	4133132.7	BRKT-OUTER DECK LIFT	1				
19	2183071-03	SPACER-15.88X10.32X24	2				
20	2720501.7	LEVER-DECK LIFT	1				
21	64168-2	COTTER-HAIRPIN.08X1.19	2				
22	64061-37	ROLL PIN-1/8X1.00	1				
23	64188-53	PIN-CLEVIS 1/2X1.0	1				
24	4132290.7	WLDMT-DECKLIFT LEVER	1				
25	2720544	SPRING-COMPRESSION	1				
26	64123-67	BLT-HEX 3/8-16X2	1				
27	64168-1	COTR-HAIRPIN.120X2-3/8	1				
28	4126611	LABEL-H.O.C. OUTER,	1				
29	2720511.7	WLDMT-LVR STOP LATCH	1				
30	2720517.7	BRKT-INNER DECK LIFT	1				
31	64175-05	PUSHNUT-1/2 DIA	1				
32	64123-82	BOLT-HEX 3/8-16X2-1/2	1				
33	2188141	ASSY, PIN & LANYARD	1				
34	2720743	LBL-ZT200 HT CUT INNER	1				
35	2720503	ROD-LIFT STOP	1				
36	64163-29	WASHER-21/64X1X11GA	2				
37	64123-70	BOLT-HEX 3/8-16X1-1/2	2				

# CASTER ASSEMBLY

LEO  
PLUS

FIGURE 4

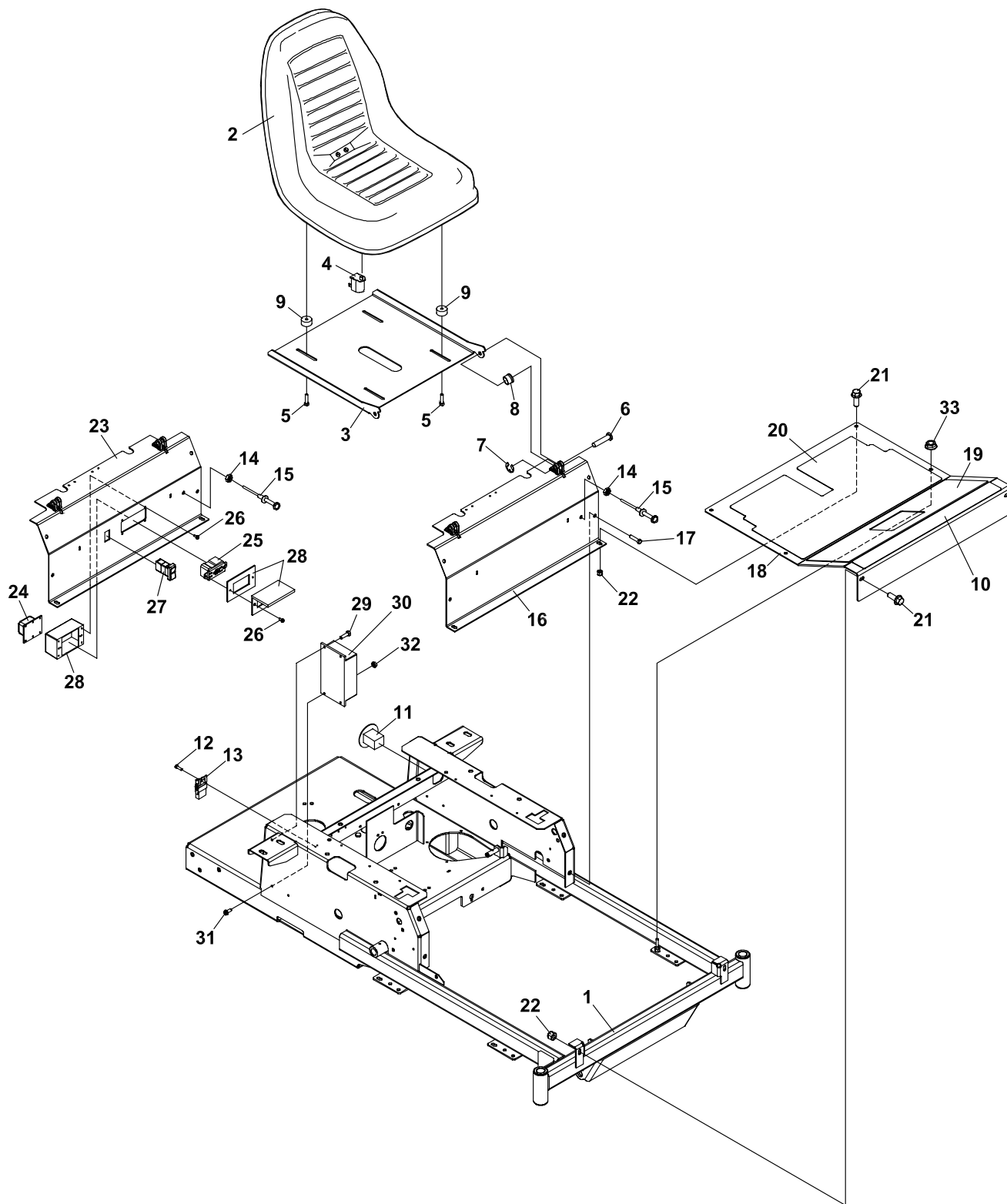


ITM	PART NO.	DESCRIPTION	QTY	ITM	PART NO.	DESCRIPTION	QTY
1	4134449	S-FRAME W/LABS, BOB-CAT	1				
2	64163-07	WASHER, 1-1/32X1-3/4X1/4	4				
3	85010N	ZERK, 1/4-28	2				
4	2722443.7	WLDMT-CASTER YOKE	2				
5	64123-212	BOLT-5/8-11X6.00	2				
6	64229-06	LOCKNUT, NYLON 5/8-11	2				
7	64144-24	SNAP RING 1.00 EXT	2				
8	64163-64	WSHR 1.015X1.500X14GA	4				
9	2722230-01	SPANNER-11" WHEEL	2				
10	2722233	WHEEL-11"ASSY	2				
11	2722231	SPACER-END	4				

# KICKPLATE/SEAT ASSEMBLY

LEO PLUS

FIGURE 5

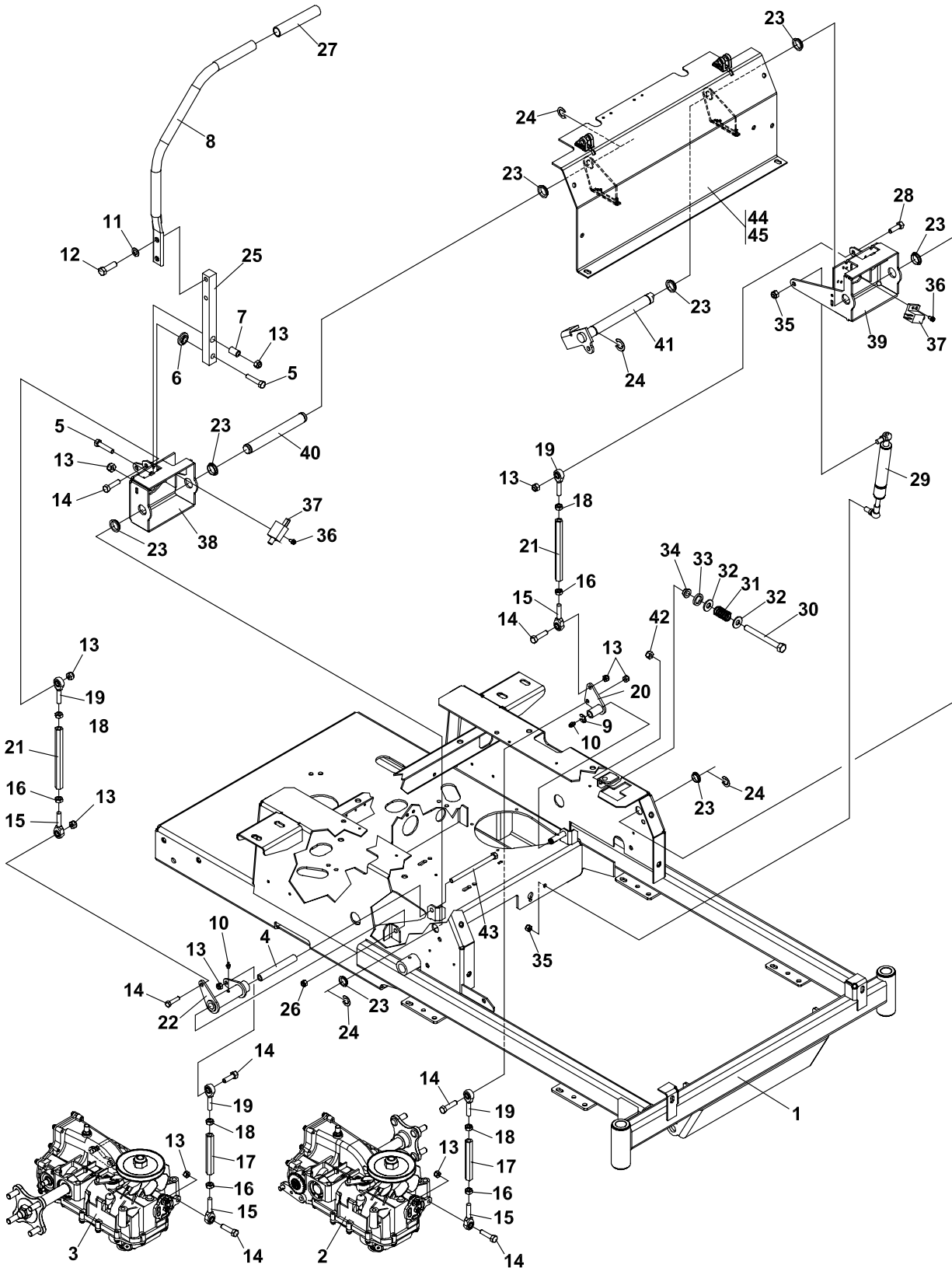


ITM	PART NO.	DESCRIPTION	QTY	ITM	PART NO.	DESCRIPTION	QTY
1	4134449	S-FRAME W/LABS, BOB-CAT	1				
2	4126406	SEAT	1				
3	4133517.7	PLATE-SEAT	1				
4	4124009	SWITCH-SEAT NO	1				
5	64139-10	BLT-WLF 5/16-18X1-1/4	4				
6	33138-09	PIN-CLEVIS GRVD .38 X 1.31	2				
7	64144-30	SNAP RING .375	2				
8	38371-01	BRG-NYLINER 3/8	2				
9	2720975-07	SPACER-NYLON 3/8"	4				
10	2721861	MAT-FOOT PLATE UPPER	1				
11	48030N	HOUR METER ASSEMBLY	1				
12	64197-015	BLT-TDFM 10-32X1/2	2				
13	2188154	MODULE-DELAY	1				
(ITEMS 14 & 15 NOT USED ON 17.5 HP UNITS)							
14	64025-04	NUT-3/8-24 HEX	1				
15	108009-07	CONTROL-CHOKE, 59	1				
16	4132492	S-FRONT PLATE	1				
17	64262-010	BLT-FLG HD 3/8-16 X 3/4	4				
18	4132446	S-FOOTPLATE	1				
19	4129955	MAT-FOOT PLATE MIDDLE	1				
20	2721859	MAT-FOOT PLATE LOWER	1				
21	64262-011	BOLT-FLG HD 3/8-16X1	4				
22	64229-03	LOCKNUT-NYLON 3/8-16	4				
(ITEMS 23-30 USED ON 25 HP UNITS ONLY)							
23	4132493	S-FRONT PLATE	1				
24	4127677-01	COIL	1				
25	4127677-02	GFCI RECEPTACLE	1				
26	64152-60	SCREW-#6-32 X 1/2	6				
27	2721815	SWITCH-LIGHT	1				
28	4127677	MODULE-POWERLINK	1				
29	64152-27	1/4-20X5/8 LG SP SCREW	2				
30	4127676	MODULE-POWERLINK	1				
31	64152-10	10-24X3/4 MACH SCREW	1				
32	64025-15	NUT-HEX #10-24 KEPS	1				
33	64268-03	NUT-FL NYLON LOCK 3/8-16	2				

# STEERING

# LEO PLUS

## FIGURE 6





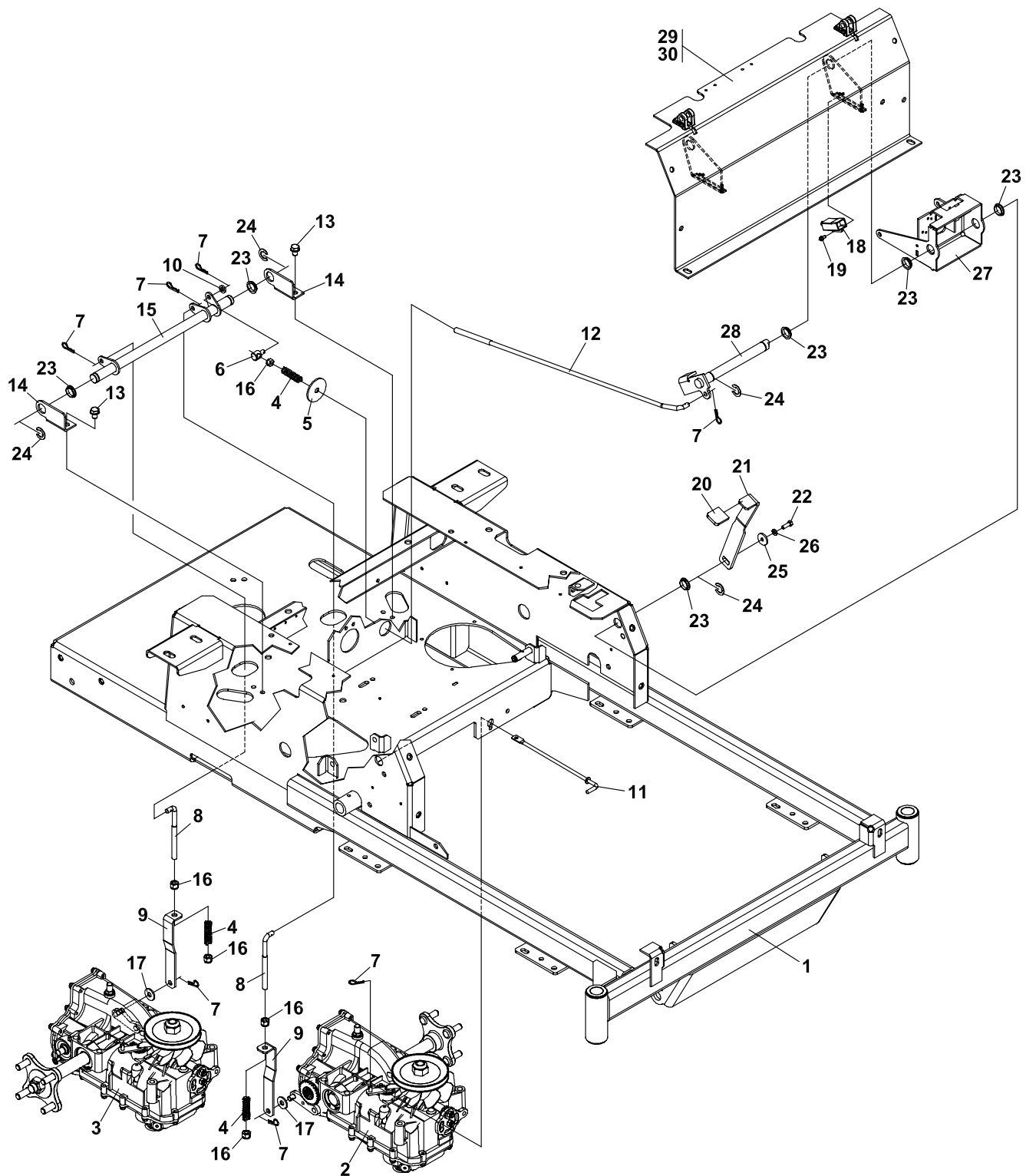
**FIGURE 6**

ITM	PART NO.	DESCRIPTION	QTY	ITM	PART NO.	DESCRIPTION	QTY
1	4134449	S-FRAME W/LABS, BOB-CAT	1				
2	4132434	TRANSAXLE, LH	1				
3	4132435	TRANSAXLE, RH	1				
4	4133172	TUBE-SPANNER	1				
5	64123-69	BOLT-5/16-18X1-1/2 HEX	4				
6	4133157	GUIDE-CONTROL LEVER	2				
7	4133156	SPACER-.500X.334X.760	2				
8	4122172.7	LEVER-TRACTION CNTRL	2				
9	64221-05	E-CLIP, .328 ID	1				
10	85010N	ZERK, 1/4-28 STR SF THRD	2				
11	64006-03	LOCKWSHR-HEL 3/8	4				
12	64123-16	BOLT-HEX 3/8-16X1-1/4	4				
13	64229-02	LOCKNUT-NYLON 5/16-18	12				
14	64123-47	BLT-HEX 5/16-18X1-1/4	7				
15	38369-01	ROD END BALL JOINT RH	4				
16	64025-03	NUT-HEX 5/16-24	4				
17	2188140-4	TURNBUCKLE	2				
18	64025-33	NUT-HEX 5/16-24 LH	4				
19	38369-02	ROD END BALL JOINT LH	4				
20	4132022.7	WLDMT-CNTRL BELLCRANK	1				
21	2188140-3	TURNBUCKLE	2				
22	4133130.7	WLDMT-BELL CRANK	1				
23	4127142	BUSHING-CONTROL ARM	8				
24	64221-03	E-CLIP	4				
25	4132189	BAR-HANDLE	2				
26	64229-03	LOCKNUT-NYLON 3/8-16	1				
27	2188144	GRIP, .75ID X 12	2				
28	64123-68	BOLT-HEX 5/16-18X1	1				
29	2721246	DAMPNER	2				
30	64123-205	BOLT-HEX 5/16-24X4	2				
31	2188139	SPRING-COMPRESSION	2				
32	64163-55	WASHER .328X.75X14 GA	4				
33	64163-54	.516X.75X12GA THK WSHR	2				
34	38304-02	BRG, FLGD PLASTIC	2				
35	64237-05	LOCKNUT-NYLON M8-1.25	4				
36	64197-015	BLT-TDFM 10-32X1/2 TORX	4				
37	108208	SWITCH DBL POLE	2				
38	4132028.7	WLDMT-CONTROL, RH	1				
39	4132026.7	WLDMT-CONTROL, LH	1				
40	4132068	ROD-RH CONTROL	1				
41	4132064	WLDMT-BRAKE ARM	1				
42	64229-08	LOCKNUT NYLON 5/16-24	2				
43	64123-130	BOLT-HEX 3/8-16X5-1/2	1				
44	4132492	S-FRONT PLATE (USED ON 17.5, 18 & 20 HP UNITS)	1				
45	4132493	S-FRONT PLATE (USED ON 25 HP UNITS)	1				

# PARKING BRAKE

# LEO PLUS

## FIGURE 7

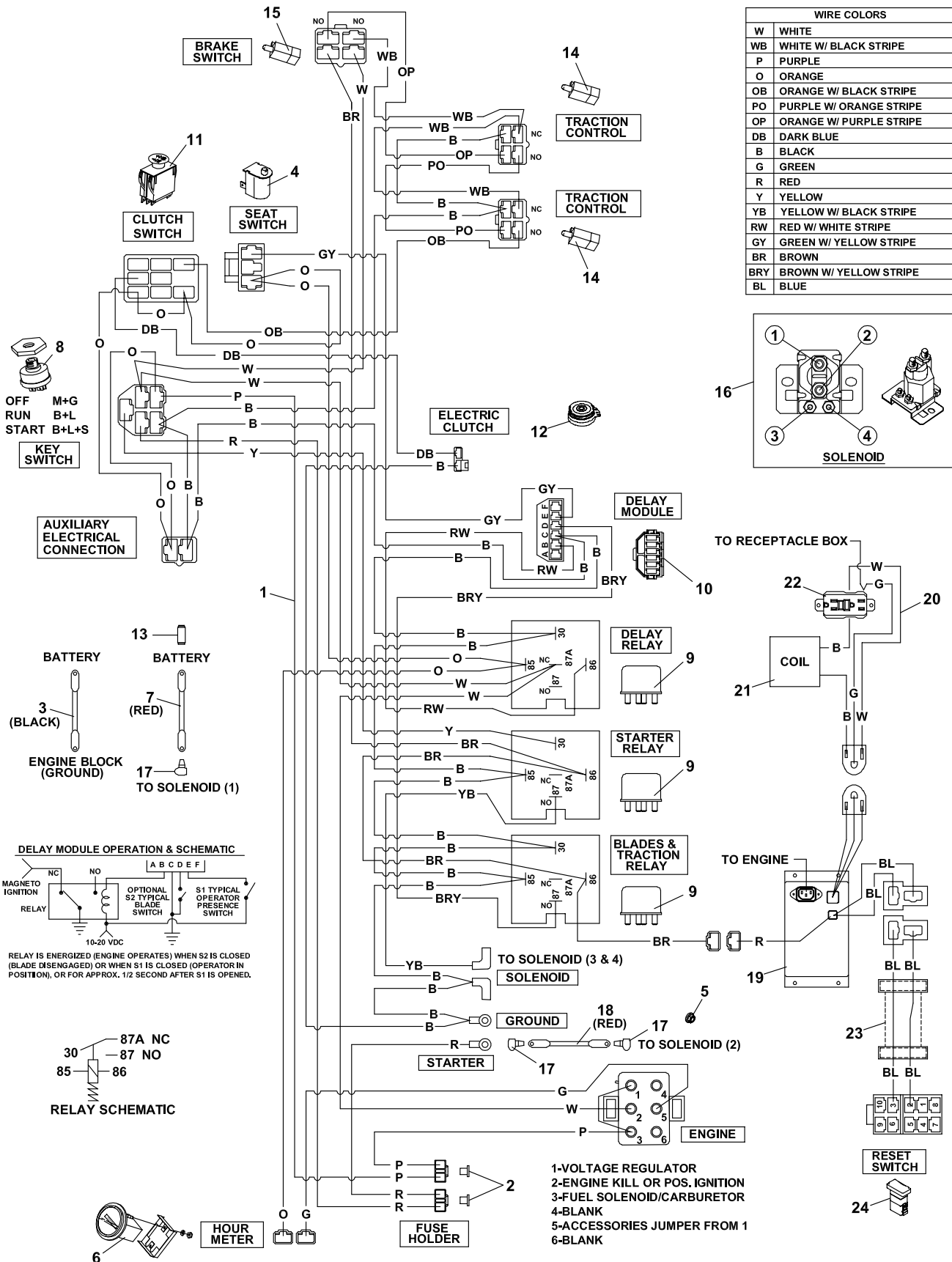


ITM	PART NO.	DESCRIPTION	QTY	ITM	PART NO.	DESCRIPTION	QTY
1	4134449	S-FRAME W/LABS, BOB-CAT	1				
2	4132434	TRANSAXLE, LH	1				
3	4132435	TRANSAXLE, RH	1				
4	4133943	SPRING-COMPRESSION	3				
5	64163-17	WASHER, 25/64X2X11GA	1				
6	33103	SWIVEL	1				
7	64168-2	COTTER-HAIRPIN.08X1.19	8				
8	4132051	ROD-BRAKE	2				
9	4133521	LINK-PARKING BRAKE	2				
10	64163-02	WASHER-.328X.608X11GA	1				
11	4133253	ROD-BYPASS CONTROL	2				
12	4132050	ROD-BRAKE	1				
13	64197-016	BOLT-TDFM 3/8-16X1/2	4				
14	4133536.7	BRKT-BRAKE BEARING	2				
15	4133539	WLDMT-BRAKE SHAFT	1				
16	64229-03	LOCKNUT-NYLON 3/8-16	5				
17	64163-31	WASHER, 25/64X1X12	2				
18	2188156	SWITCH-NONO DBL POLE	1				
19	64197-015	BLT-TDFM 10-32X1/2 TORX	2				
20	2188155	GRIP, 1/4X1X4-1/2	1				
21	4132041.7	ARM-BRAKE	1				
22	64123-89	BOLT-HEX 1/4-20X3/4	1				
23	4127142	BUSHING-CONTROL ARM	6				
24	64221-03	E-CLIP	4				
25	64163-34	WSHR.256/.267X1X11GA	1				
26	64006-01	LOCKWASHER-1/4 HELICAL	1				
27	4132026.7	WLDMT-CONTROL, LH	1				
28	4132064	WLDMT-BRAKE ARM	1				
29	4132492	S-FRONT PLATE (USED ON 17.5, 18 & 20 HP UNITS)	1				
30	4132493	S-FRONT PLATE (USED ON 25 HP UNITS)	1				

# WIRE HARNESS

# LEO PLUS

FIGURE 8



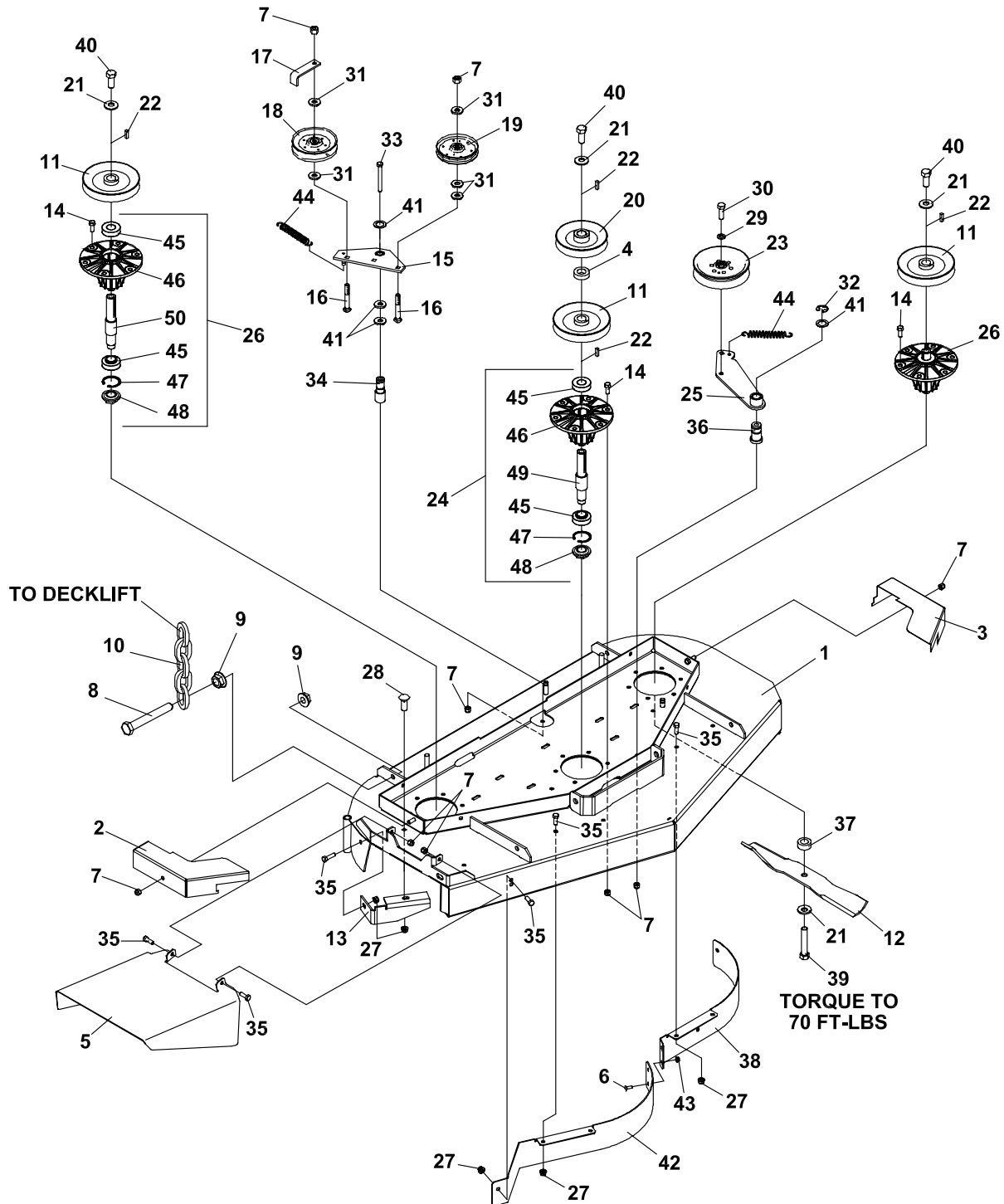
**FIGURE 8**

ITM	PART NO.	DESCRIPTION	QTY	ITM	PART NO.	DESCRIPTION	QTY
1	4127204	WIRE HARNESS	1				
2	148082-20	FUSE 20 AMP	2				
3	108061-13	CABLE-BATTERY 36 BLK	1				
4	4124009	SWITCH-SEAT NO	1				
5	64141-2	NUT-WLF 1/4-20	1				
6	48030N	HOUR METER ASSY	1				
7	2722227-01	CABLE-BATTERY (INCLUDES ITEMS 17 & 20)	1				
8	128010	SWITCH, KEY	1				
9	2722325	RELAY-40AMP SEALED	3				
10	2188154	MODULE-DELAY	1				
11	2721505	SWITCH-PTO	1				
12	2722016	CLUTCH-ELECTRICAL	1				
13	112386	BOOT,BAT TERM POS	1				
14	108208	SWITCH DBL POLE	2				
15	2188156	SWITCH-NONO DBL POLE	1				
16	38665	SOLENOID	1				
17	2308095	COVER-TERMINAL	3				
18	108061-04	CABLE-BATTERY 20 RED	1				
		(ITEMS 19-24 USED ON 25HP MODEL ONLY)					
19	4127676	MODULE-POWERLINK	1				
20	4127677	MODULE-POWERLINK OUT (INCLUDES ITEMS 20 & 21)	1				
21	4127677-01	COIL	1				
22	4127677-02	GFCI RECEPTACLE	1				
23	4127678	CONNECTOR-SWITCH	1				
24	2721815	SWITCH, RESET	1				

# 48" SIDE DISCHARGE

# LEO PLUS

## FIGURE 9

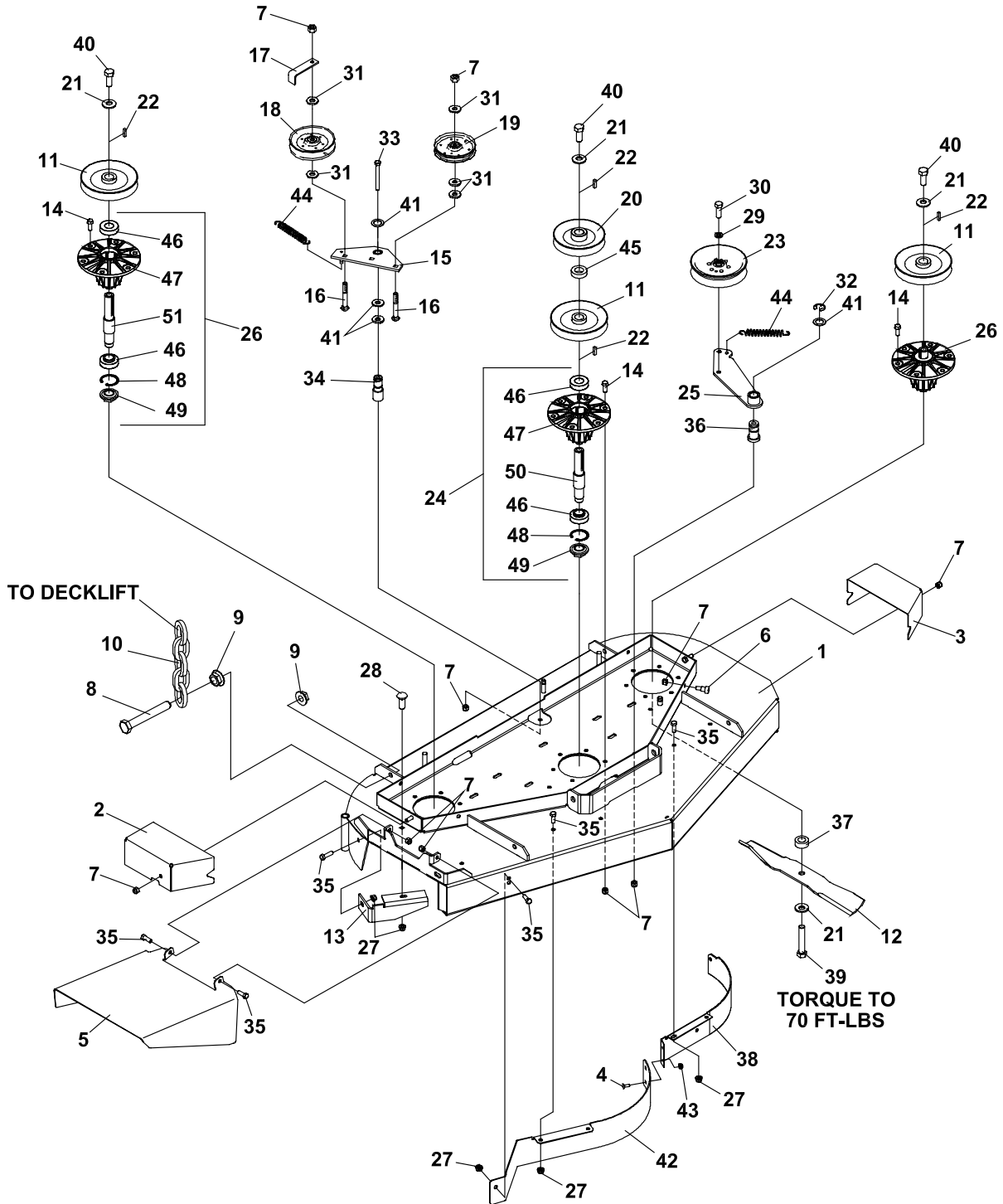


ITM	PART NO.	DESCRIPTION	QTY	ITM	PART NO.	DESCRIPTION	QTY
1	4126522	S-48 CUTTERDECK W/LABS	1	42	4120180.7	BAFFLE-48 FRONT RH	1
2	4127852.2	COVER-BELT, 48 LH	1	43	64268-01	LOCKNUT-1/4-20 NYLON	2
3	4127853.2	COVER-BELT, 48 RH	1	44	2188131	SPRING-EXTENSION	2
4	64163-68	WSHR-1.015X1.5X9GA	1	45	38348-01	BEARING-SPINDLE SEALED	6
5	32723.2	CHUTE-DISCHARGE	1	46	2721096	HOUSING-SPINDLE 6 HOLE	3
6	64018-2	BLT-CRG 1/4-20X3/4	2	47	64144-38	SNAP RING	3
7	64229-03	LOCKNUT-NYLON 3/8-16	24	48	38315	NUT-SPINDLE	3
8	64205-029	BLT-MET M12X1.75X40	8	49	2183070-01	SHAFT-SPINDLE LONG (USED ON 4115849 CENTER SPINDLE ONLY)	1
9	64246-04	NUT-WHIZ M12-1.75	16				
10	2188127	CHAIN-6.35 (.250) 5 LINKS	4				
11	2308140	PULLEY-ENGINE	3	50	2183070-02	SHAFT-SPINDLE (USED ON 4115850 OUTER SPINDLE ONLY)	2
12	112111-01	BLADE 16.25 OFFST HLFT	3				
13	4120208.7	BAFFLE-DISCHARGE 32-48	1				
14	64262-012	BLT-FLG HD 3/8-16 X 1-1/4	18				
15	4121584.7	WLDMT-IDLER ARM	1				
16	64018-18	BOLT-CARRIAGE 3/8-16X2	2				
17	2302125.7	GUIDE-BELT	1				
18	48393	PULLEY-V IDLER	1				
19	38297	IDLER, 5 OD FLANGED	1				
20	2228034	PULLEY-5.25 DEEP GRV	1				
21	64209-03	SPRING WASHER.67 ID	6				
22	64164-12	KEY-1/4X1/4X1 SQ END	4				
23	128169	PULLEY, IDLER 5.50	1				
24	4115849	S-ASSY SPINDLE, CENTER (INCLUDES ITEMS 45-49)	1				
25	4110580.7	WLDMT-DECK IDLER	1				
26	4115850	S-ASSY SPINDLE OUTER (INCLUDES ITEMS 45-48 & 50)	2				
27	64268-03	NUT-FL NYL LOCK 3/8-16	8				
28	64018-3	BOLT-3/8-16X1 CARRIAGE	1				
29	64006-05	LOCKWSHR-HELICAL 1/2	1				
30	64123-05	BLT-HEX 1/2-20X1-1/2	1				
31	64163-46	WASHER.383/.393X.88X7GA	5				
32	64221-04	E-RING.875	2				
33	64123-138	BLT-HEX 3/8-16X3-3/4	1				
34	4116712	PIN-PIVOT	1				
35	64123-50	BOLT-HEX 3/8-16X1	9				
36	4116661	PIN-PIVOT	1				
37	4118314	SPACER-BLADE 16MM	3				
38	4120175.7	BAFFLE-48 FRONT LH	1				
39	64123-187	BLT-HEX 5/8-18 X 3 3/4	3				
40	64123-208	BLT-HEX 5/8-18X1.5	3				
41	64163-65	WASHER-.890X1.375X18GA	4				

# 52" SIDE DISCHARGE

# LEO PLUS

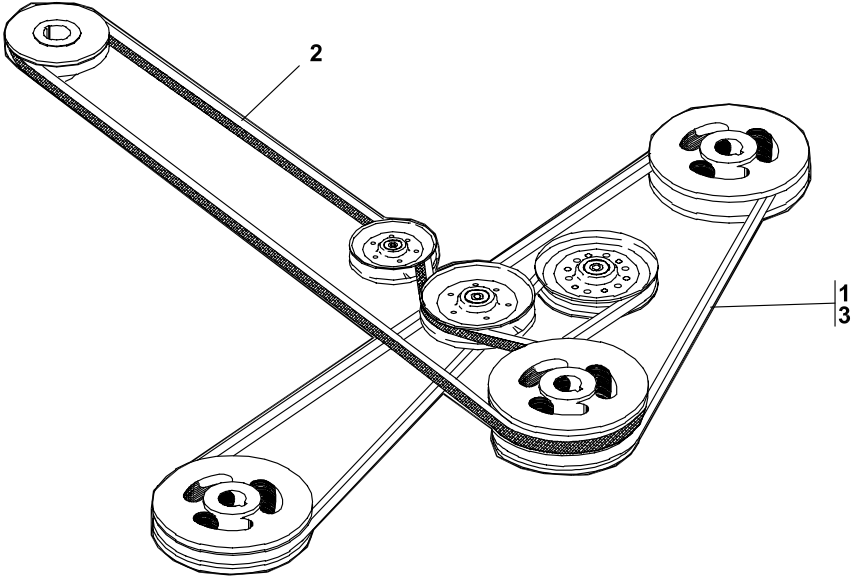
## FIGURE 10





ITM	PART NO.	DESCRIPTION	QTY	ITM	PART NO.	DESCRIPTION	QTY
1	4126527	S-52 DECK W/LABS	1	42	4118428.7	BAFFLE-FRONT RH	1
2	2722574.2	COVER-BELT RH	1	43	64268-01	NUT-FL NYL LOCK 1/4-20	2
3	2722575.2	COVER-BELT LH	1	44	2188131	SPRING-EXTENSION	2
4	64018-2	BLT-CRG 1/4-20X3/4	2	45	64163-68	WSHR-1.015X1.5X9GA	1
5	32723.2	CHUTE-DISCHARGE	1	46	38348-01	BEARING-SPINDLE SEALED	6
6	64166-17	BLT-SHLDR 3/8-16X1.12	4	47	2721096	HOUSING-SPINDLE 6 HOLE	3
7	64229-03	LOCKNUT-NYLON 3/8-16	28	48	64144-38	SNAP RING	3
8	64205-029	BLT-MET M12X1.75X40	8	49	38315	NUT-SPINDLE	3
9	64246-04	NUT-WHIZ M12-1.75	16	50	2183070-01	SHAFT-SPINDLE LONG (USED ON 4115849 CENTER SPINDLE ONLY)	1
10	2188127	CHAIN-6.35 (.250) 5 LINKS	4	51	2183070-02	SHAFT-SPINDLE (USED ON 4115850 OUTER SPINDLE ONLY)	2
11	2308140	PULLEY-ENGINE	3				
12	112111-02	BLADE 18.00 OFFST HLFT	3				
13	4115864.7	BAFFLE-DISCHARGE	1				
14	64262-012	BLT-FLG HD 3/8-16 X 1-1/4	18				
15	4121584.7	WLDMT-PTO IDLER	1				
16	64018-18	BOLT-CARRIAGE 3/8-16X2	2				
17	2302125.7	GUIDE-BELT	1				
18	48393	PULLEY-V IDLER	1				
19	38297	IDLER, 5 OD FLANGED	1				
20	2228034	PULLEY-5.25 DEEP GRV	1				
21	64209-03	SPRING WASHER.67 ID	6				
22	64164-12	KEY-1/4X1/4X1 SQ END	4				
23	128169	PULLEY, IDLER 5.50	1				
24	4115849	S-ASSY SPINDLE, CENTER (INCLUDES ITEMS 46-50)	1				
25	4110580.7	WLDMT-IDLER	1				
26	4115850	S-ASSY SPINDLE OUTER (INCLUDES ITEMS 46-49 & 51)	2				
27	64268-03	NUT-FL NYL LOCK 3/8-16	8				
28	64018-3	BOLT-3/8-16X1 CARRIAGE	1				
29	64006-05	LOCKWSHR-HELICAL 1/2	1				
30	64123-05	BLT-HEX 1/2-20X1-1/2	1				
31	64163-46	WASHER.383/.393X.88X7GA	5				
32	64221-04	E-RING.875	2				
33	64123-138	BLT-HEX 3/8-16X3-3/4	1				
34	4116712	PIN-PIVOT	1				
35	64123-50	BOLT-HEX 3/8-16X1	9				
36	4116661	PIN-PIVOT	1				
37	4118314	SPACER-BLADE 16MM	3				
38	4118427.7	BAFFLE-FRONT LH	1				
39	64123-187	BLT-HEX 5/8-18 X 3 3/4	3				
40	64123-208	BLT-HEX 5/8-18X1.5	3				
41	64163-65	WASHER-.890X1.375X18GA	4				

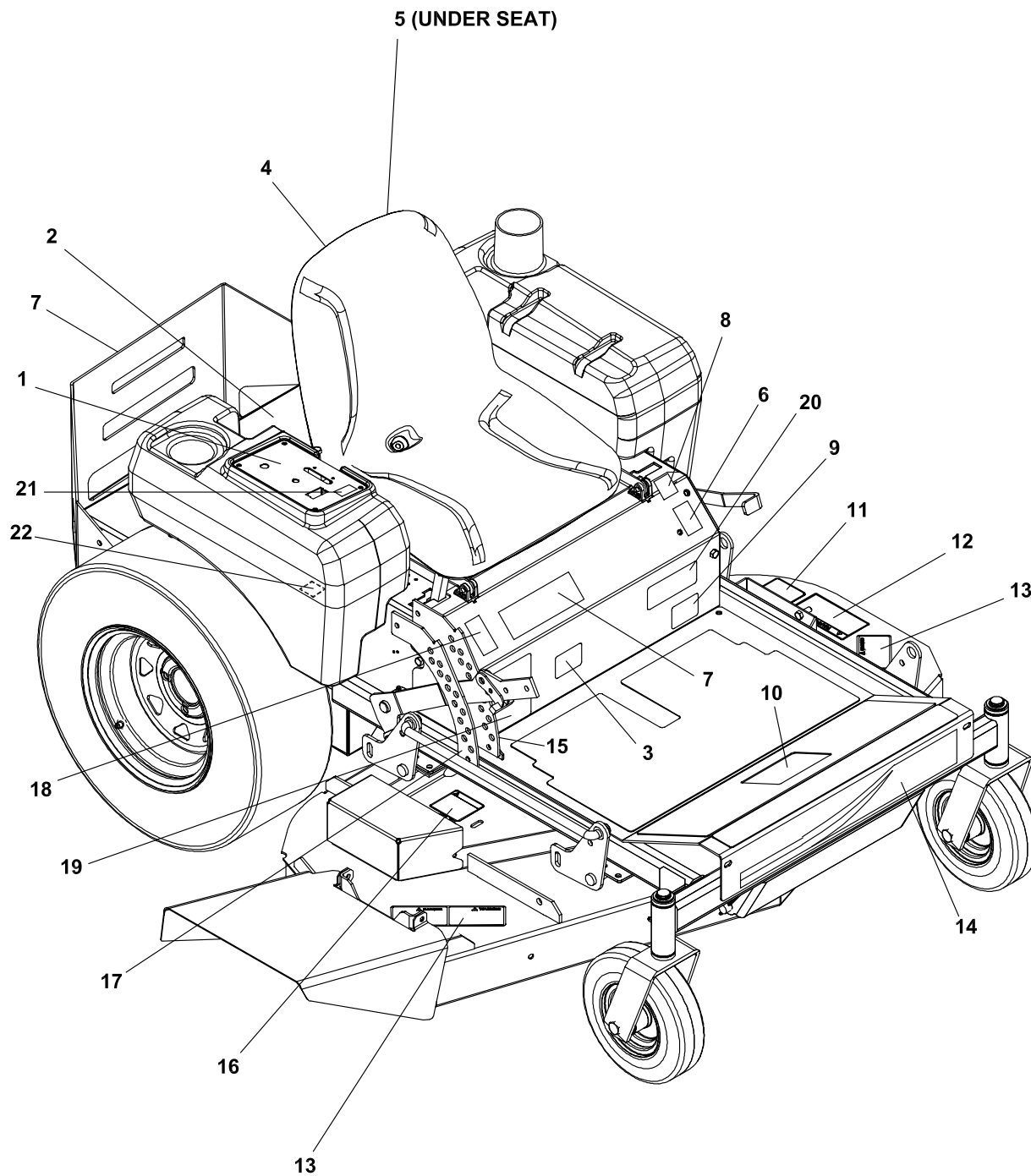
**FIGURE 11**



**FIGURE 11**

<b>ITM</b>	<b>PART NO.</b>	<b>DESCRIPTION</b>	<b>QTY</b>	<b>ITM</b>	<b>PART NO.</b>	<b>DESCRIPTION</b>	<b>QTY</b>
1	2188176	BELT-CUTTERDECK 52 (USED ON 52" DECK)	1				
2	2720815	BELT-PTO 48	1				
3	128110	BELT-CUTTERDECK (USED ON 48" DECK)	1				

## FIGURE 12



ITM	PART NO.	DESCRIPTION	QTY	ITM	PART NO.	DESCRIPTION	QTY
1	4126803	LABEL-CONTROL PANEL	1				
2	2000570	LABEL-WARN FUEL PICT.	1				
3	340830	DECAL, CAUTION	1				
4	4124262	LABEL-BOBCAT	1				
5	2000590	LABEL, WARN BATTERY	1				
6	2000701	LABEL - LH TRACTION	1				
7	4133524	LABEL-LEO PLUS	2				
8	4126804	LABEL-PARKING BRAKE	1				
9	4126802	LABEL-TIRE PRESSURE	1				
10	4118843	LABEL-WARNING	1				
11	2000696	LABEL - BLADE INSTALL	1				
12	2000572	LABEL-WARNING BLADES	1				
13	2000677	LABEL-DANGER/WARNING	2				
14	4126850	LABEL-KICKPLATE, LEO	1				
15	2720743	LABEL-ZT200 HOC INNER	1				
16	2000577	LABEL, WARNING	3				
17	4126611	LABEL-H.O.C. OUTER	1				
18	2000700	LBL - RH TRACTION	1				
		(ITEMS 19 & 20 USED ON 25HP ONLY)					
19	4127996	LABEL-POWERLINK	1				
20	4127984	LABEL-WARNING, ELECTR.	1				
21	4128578	LABEL-CHOKE (USED ON 17.5 HP ONLY)	1				
22	4133980	LABEL-MAINTENANCE	2				

## **World Class Quality, Performance And Support**



Equipment from Jacobsen, a Textron company, is built to exacting standards ensured by ISO 9001 and ISO 14001 registration at all our manufacturing locations.

A worldwide dealer network and factory-trained technicians backed by Textron Parts Xpress provide reliable, high-quality product support.



---

***BOB-CAT BROWER BUNTON CUSHMAN RYAN STEINER***